

Chameleon hat

Crochet Pattern for all ages



Rachel McKerracher

Strawberry Moon Crochet

Chameleon Hat

This is a pattern for a crochet hat to fit sizes baby to adult large. The pattern is a simple 3 row repeat that doesn't include any advanced stitches- just sc, dc and chains. You can play around a lot with colours with this pattern, and make it to match any outfit like a true chameleon! You don't need to follow my suggestion of alternating colours for each row. This hat will look amazing with variegated or long print yarn paired with a solid colour.

Suggested hook size: 4mm

Yarn weight: aran/worsted/yarn weight 4.

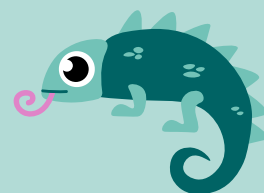
Suggested yarn: Something with a bit of fluffiness to it would be a good idea to fill in the chain spaces a bit, but any aran weight yarn should do the job.

Sizes available:

baby/toddler/child(teen (adult S)/adult M-L)

To fit head circumference*:

37-41/42-46/47-52(53-56/57-61) cm



*make the size that best fits your head circumference rather than your age! If head is between sizes always size up. Follow instructions for your chosen size (denoted by colour).

Gauge: By end of increases for crown (p. 3) the hat should be approx. 10.5/13/16(17/17) cm diameter. This is your gauge swatch.

Yardage (will vary slightly according to yarn used):

Total yardage = 90/110/140(160/170) m or 100/120/155(180/200) yards

This is about 70% for the main colour and 30% for the secondary colour

© Strawberry Moon Crochet. Pattern not for resale. If you sell products made using this pattern, please credit me as the designer.

Abbreviations list:

sc= single crochet stitch	bphdc = back post hdc
dc = double crochet stitch	sts = stitches
ch = chain stitch	slst = slip stitch
chsp = chain space	stdc = standing double crochet stitch
hdc = half double crochet stitch	yo = yarn over
fphdc = front post hdc	sk = skip next st

Pattern Notes:

- The hat is worked in one seamless piece. You will crochet circular increase rounds for the top of the hat. The same stitch pattern will then be continued downwards.
- The ribbing on the hat uses front and back post hdc stitches to give a stretchy, warm band. It is worked double length and folded back on itself.
- Every time you change yarn colour, ch1 with the new colour, and pull the old colour tightly. Then, work the new colour as per instructions.
- Plan your colour scheme carefully before you start. I used two colours, alternating every row.

Pattern Starts Here!

Increases for crown:

All Sizes:

Make a slip knot and Ch2 (or make a magic ring) using colour A (main hat colour).

Round 1: (Colour A) Make a standing double crochet (stdc)* and dc 11 into first chain or magic ring. Join round with slst. (12 sts)

*Note: this is how you will start every round. I strongly recommend learning the standing double crochet stitch, as it gives a much neater appearance (though if you prefer you can work ch3 to count as the first dc instead). To work a standing double crochet, pull up a loop at the beginning of the round to roughly the height of a double crochet, twist the loop yarn around the hook as if working a yo, insert your hook into the same stitch the loop is pulled up from, yo, pull through the stitch and the loop twisted over the hook, yo, pull through both loops left on the hook. My favourite online tutorial can be found here: <https://www.youtube.com/watch?v=9DCN4RNO7jg&t=106s>

Round 2: (Colour B) ch1, (sc2) into every st, join with slst. (24 sts)

Round 3: (Colour A) Work (stdc, ch1, dc) in first st (counts as first V st). Skip next st. Work [V st = (dc, ch1, dc), skip next st] all the way around, join with slst. (12 V sts)

Round 4: (Colour B) Slst into first chsp of R3. Work (stdc, dc3) into first chsp, then work dc4 into every chsp around, join with slst. (48 sts)

Round 5: (Colour A) ch1, (sc2) in first st, then sc in next 3 sts. Continue working [(sc2), sc in next 3 sts] until end of round, join with slst. (60 sts)

Size **baby**: end increases for crown here and continue to next section.

Round 6: (Colour B) Work (stdc, ch1, dc) in first st (counts as first V st). Skip next st. Work V st, skip next 2 sts. Continue working [V, sk1, V, sk2] all the way around, join with slst. (24 V sts, 72 sts total).

Size **toddler**: end increases for crown here and continue to next section.

Round 7: (Colour A) *follow instructions for your size*

Size **child**: Slst into first chsp of R6. Work (stdc, dc3) into first chsp, then work dc3 into next 3 chsps around. Continue working [dc4 in next chsp, dc3 in next 3 chsps] around, join round with slst. (78 sts)

Size **child**: end increases for crown here and continue to next section.

Size **teen (S)**, **adult (M-L)**: Slst into first chsp of R6. Work (stdc, dc3) into first chsp, then work dc3 into next chsp. Continue working [dc4 in next chsp, dc3 in next chsp] around, join round with slst. (84 sts)



Photo 1: Round 7

Round 8: (Colour B) *Follow instructions for your size:*

Size **teen/adult (S)**: ch1, sc all the way around, join with slst. (84 sts)

Size **adult (M-L)**: ch1, [sc in next 27 sts, (sc2) in next st]. Repeat brackets 2 more times, join round with slst. (87 sts).

Patterned Rounds:

Setup rounds: for size **toddler**, work one round of dc in every chsp, followed by one round of sc, in colour A followed by B.

For size **child**, work one round of sc in colour B. For the other sizes, no setup rounds are needed.

Round 1: (Colour A) Work (stdc, ch1, dc) in first st (counts as first V st). Skip next 2 sts. Work [V, skip next 2 sts] all the way around, join with slst.

20/24/26(28/29) v-stitches in round.

Round 2: (Colour B) Slst into first chsp of R1. Work (stdc, dc2) into first chsp, then work dc3 into every chsp around, join with slst.

60/72/78(84/87) dc stitches in round.

Round 3: (Colour A) ch1, work sc until end of round, join with slst.

60/72/78(84/87) hdc v-stitches in round.

Round 4: (Colour B) repeat R1.

Round 5: (Colour A) repeat R2.

Round 6: (Colour B) repeat R3.

Rounds 7-9: Now repeat R1-R3 1 more time for every size. For **baby** and **toddler** size, repeat R1-2 only, leave out the final repeat of R3.

Ribbing:

This is where we can control the length of the hat. I would suggest to try the hat on as you go, and add or frog ribbing as suits the depth of your head. Remember that the rubbing is folded back on itself, so that should help you adjust the height a bit.

Round 1: Change to colour B (or colour you want to use for the ribbing). Ch1, work hdc all the way around, join with a slst. Size **adult (M-L)**: work (hdc2) in the last st to increase 1.

60/72/78(84/88) hdc in round.

Round 2: Ch1, then work [fphdc, bphdc] all the way around, alternating front and back post hdc stitches to make a stretchy ribbing. Join round with a slst.

Repeat Round 2 a further 4/5/6(7/7) time(s). Try the hat on, and if it looks like it's going to be too short or long, add/frog a row of ribbing to make it fit better.

Block the hat using your preferred method (steaming, gentle steam iron, or cold water and dry flat). Note that acrylic yarn may melt if ironed on higher than a very low setting.

Your finished hat should have circumference approx.

39/47/53(55/57) cm or 15.5/18.5/20.5(21.5/22.5) inches,
and height 16.5/18/19.5(20.5/21) cm or 6.5/7/7.5(8/8.5) inches
when brim is folded.

If you wish, attach a pom-pom into the top of the hat through the magic ring or starting ch. Sew a button inside the top of the hat to make your pom-pom removable for washing.

Congratulations on finishing your Chameleon hat!

I would love to see your finished makes on Instagram,

under the hashtag [#chameleonhat](#)

my designer name is [@strawberrymoon.crochet](#)

